

Regina Catholic Education Center

Return-to-Learn Plan 2020-2021

This draft document is subject to change (last modification on August 18, 2020)



Inspiring Faith and Excellence

TABLE OF CONTENTS

Slides 3-4: Leadership/Return To Learn Committee

Slides 5-8: Infrastructure

Slides 9-18: Health and Safety

Slides 19-24: Academics

Slide 25: Social/Emotional/Behavioral Health

Slide 26: Closing Message



Inspiring Faith and Excellence

LEADERSHIP

RETURN TO LEARN COMMITTEE

Our Return to Learn Committee for Regina Education is comprised of the following committee members.

Laurie Boland - Jr./Sr. High Representative
Jim Burchers - Chief Maintenance
Mary Charlton - Parent Representative, Epidemiologist
Andy Cutter - Board Member/Parent
Tim Foley - Jr./Sr. High Assistant Principal
Abigail Kaska - Student Representative
Dan Livorsi - Parent Representative, Infectious Disease Physician
Jess Pizana - Tech Director Regina Education Center
Larry Pohren - Jr./Sr. High Representative
Glenn Plummer - Jr./Sr. High Principal
Kris Rutt - K-6 Elementary Representative
Melinda Shetler - Board President/Parent
Shane Schemmel - Communication and Marketing Director
Kelly Starr - Elementary Assistant Principal
Celeste Vincent - Elementary Principal

This committee has been meeting on Tuesdays at 10:00 a.m. to continue their planning for the upcoming school year.



Inspiring Faith and Excellence

LEADERSHIP

The leadership committee has setup a COVID-19 tab on our Regina website. Details related to planning, notes, and resources can be found at <https://regina.org/covid/>.

Since COVID-19 remains a fluid situation, continue to visit our website for updates/changes.

At the current time, our leadership committee is planning for a return to campus on August 24, 2020 for learning with much consideration given to the health and safety of our community.



STUDENT LEARNING

Students in grades PreK-12 will return to school **on-site** for the start of the 2020-2021 school year. We will be having full days of regular school with modifications for the safety of our students and staff.

ATTENDANCE

If your family is not comfortable returning to on-site learning, families can apply to participate in our online learning option. A parent survey will be sent to families about their preference for attendance.



BUSING

All students will have assigned seats and will be required to wear a face covering while entering, riding, and exiting the bus.

Windows and vents will be open to allow for air circulation when possible.

Households will be grouped together in seats. No more than 2 students in a seat.

Buses will load from back to front by bus stop.

Buses will be cleaned upon their return to the company facility.



VISITORS AND VOLUNTEERS

There will be no visitors allowed inside Regina Catholic Education Center.

This includes volunteers, lunch visitors, family members, and classroom guests.

Parents are asked to not enter the building.

Meetings between parents/guardians with school personnel will be done virtually.

If there are other visits that are deemed necessary by administration, it will be by appointment only.



ARRIVAL AND DISMISSAL PROCEDURES

Parents will not be allowed to exit the vehicles during drop-off or pick-up.

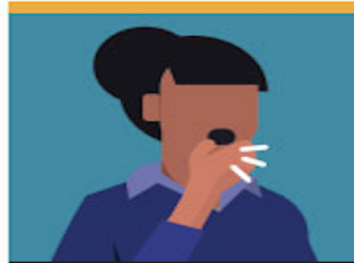
We will have dedicated drop-off locations in the morning (more information coming).

Elementary carline will run as usual around the back loop for after school pick-up.



Symptoms of Coronavirus (COVID-19)

Know the symptoms of COVID-19, which can include the following:



Cough



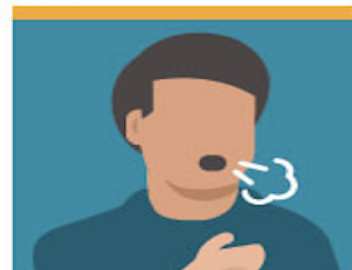
Fever



Chills



Muscle pain



Shortness of breath or difficulty breathing*



Sore throat



New loss of taste or smell

Symptoms can range from mild to severe illness, and appear 2-14 days after you are exposed to the virus that causes COVID-19.



REPORTING OF COVID-19 SYMPTOMS/EXPOSURES/POSITIVE TESTS

Regina Catholic Education Center will follow all the guidelines that we are receiving from Johnson County Public Health.

Students/Staff who are exhibiting COVID-19 symptoms or are diagnosed positive must immediately notify the appropriate building administrator.

As we receive additional information from JCPH and other local health officials, we will continue to inform our community.

For detailed information, please see the “Health Protocols During COVID-19 Outbreak” document on our website, www.regina.org/covid.



TEMPERATURE CHECKS

We will be asking families to sign a pledge that they will be taking temperatures at home on a daily basis. Should the student's temperature be 100.4°F or more, then the student should stay home for 10 days and until they are fever-free (unmedicated) and symptom free for 24 hours OR if they receive clearance from their primary care provider OR they receive a negative COVID-19 test. This is required.

We need everyone's assistance to help with this very important step in helping to control the spread. Staff will also be required to check their temperature before reporting to work.

Regina will reserve the right to send home any individuals that display symptoms and may request that the individual consult with their health care provider before returning.



FACE COVERINGS REQUIRED

Face coverings will be required for all students grades PK-12 and all staff.

Students in Preschool, Kindergarten, and 1st grade will be given additional mask breaks.

Students/staff may wear a mask, a face shield, or both.

Bandanas and gaiters are not allowed at school, but are approved for activities.

Students should bring multiple face coverings to school each day.

Face coverings must be appropriate – administration has the final say



CLASSROOMS

Our classrooms will be arranged so that all students are seated facing forward.

We will limit excess items in the rooms.

Classroom set-up will abide by social distancing as much as possible. We will be following the recommendations from the WHO (World Health organization) and AAP (American Academy of Pediatrics) as much as possible.



LUNCH

We are encouraging students to bring their own lunch this year, but our hot lunch program will be available.

Our food service program will provide meals under social distancing guidelines. In addition to the cafeteria, additional areas for meals may include classrooms and outdoor dining.

Meal times will be staggered and there will be no self-serve stations.

Families qualifying for free meals, will have breakfast options sent home in a backpack program.

More information to come as we receive further information/guidance.



RECESS

Recess is an important part of the elementary school day.

We will be staggering recess times and play areas to accommodate social distancing guidelines.

Students will be required to wash/disinfect their hands upon re-entering the building.

Equipment will be spray cleaned on a regular basis.



ASSEMBLIES

Large group assemblies or gatherings will not be held during the COVID-19 Outbreak.

We will limit the number of students who are in the common areas.

Teachers will be examining special considerations for how to conduct band, choir, orchestra, and music which typically are larger group gatherings.

We are investigating alternative ways to hold religious gatherings for the benefit of our school community.



CLEANING OF FACILITIES

Increased emphasis will be placed on cleaning and disinfecting schools on a daily and weekly basis.

Additional cleaning and sanitizing procedures will be in place throughout the school year.

Examples include: hand sanitizers, disinfecting wipes, physical barriers added in office areas, drinking fountains turned off, and increased time for student handwashing.



SIGNAGE

Regina Catholic Education Center will have signs clearly posted regarding handwashing, symptoms, face coverings, visitor policy, and lunch procedures.



Regina Catholic Education Center is offering the following options for learning this fall:

ON-SITE: Students are on-site for instructions with safety protocols in place.

REMOTE LEARNING (OFF-SITE): Students are at home receiving online instruction. Attendance each day will be mandatory.

Regina Catholic Education Center could move to the following option:

HYBRID: With this plan, Regina is open and offering on-site learning with reduced numbers of students on-site. Students would attend on-site and online based on a schedule.

*A move from **on-site** to **online** could be determined by Governor Kim Reynolds, Iowa Department of Health, Davenport Diocese, and/or the Regina Board of Education.*



ON-SITE INSTRUCTION

JH/HS

- Block periods every day to limit student contact.
 - (Day 1 - Periods 1,3,5,7/ Day 2 - Periods 2,4,6,8)
- Investigating other schedule changes to provide safe and productive learning environment.

ELEMENTARY

- Students will not switch classrooms as much as possible
- Specials classes will take place in homerooms as much as possible



Academics

ONLINE INSTRUCTION

JH/HS

- Students will login each day to their scheduled periods.
- Teachers will live-stream their classrooms.
- Use of Google Classroom and Google Meet to facilitate learning.
- Classroom technology upgrades to help with this transition.
- Attendance each day will be mandatory.

ELEMENTARY

- Students will login each day to their homerooms.
- Classroom technology upgrades to help with this transition.
- Attendance each day will be mandatory.



TECHNOLOGY

Grades 7-12 have Chromebooks.

Grades 1-6 will have assigned Chromebooks in the classroom.*

Grade K will have an assigned iPad.

If we move to exclusively on-line or if a student has to self-isolate we will check out devices for those families who have a need at home.

**Elementary Chromebooks have been ordered, but are on backorder.*



TECHNOLOGY

Every student will be assigned a learning device.

If you have an internet access concern, please contact one of the building offices for assistance.

If a student is utilizing the online option, student attendance will be mandatory and recorded.

Google Classroom and Google Meet will be utilized for online instruction.



EQUITY

Regina will work with 504 and IEP teams to ensure fair access to equitable learning opportunities.

Regina will work together with ICCSD and Grant Wood AEA to ensure safe implementation of IEP deliveries.

Teams will need to work together to address student needs remaining from the spring of 2020 and needs going into the new academic school year.



SOCIAL/EMOTIONAL/BEHAVIORAL HEALTH

In addition to keeping the students and staff physically safe during the COVID-19 Outbreak, it is also important to care for their emotional well-being.

Regina will create safe emotional environment by providing the three Rs: reassurance, routine, and regulation.

Adults can help by emphasizing strengths, hopes, and positivity.

Our school counseling program will continue to work with students in classrooms and individual settings.

Please keep teachers, counselors, and administrators informed on your family's needs.



Closing Message

WORKING TOGETHER

We, as the Regina community, are in this process together.

May we support one another as we figure out our new normal together.

May you know that we have the best interests of our students, families, and staff in mind.

This document will be ever changing as new information comes our way.

Continue to share your questions with us and we will work to get you the answers you need.

Prayers to our Regina Community.

